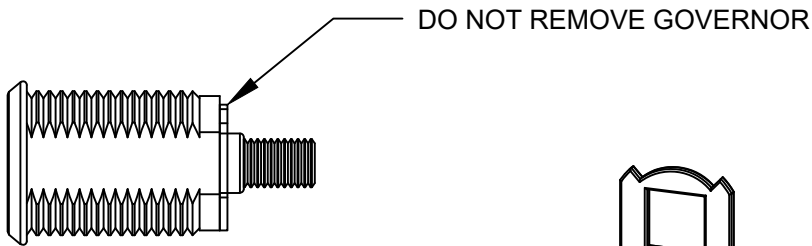
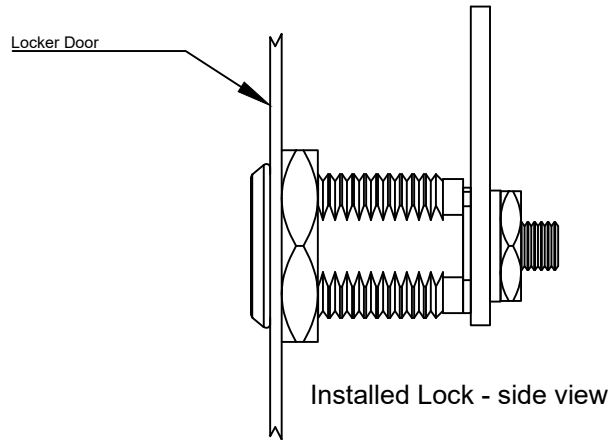
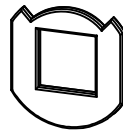


Installation: Patron Lock (MK110BM)

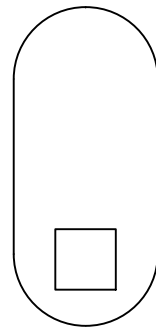
Precision Locker Company
www.precisionlocker.com



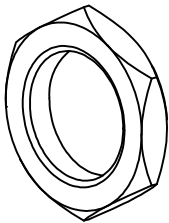
Lock Body with
Governor



Governor



Cam



Large Hex Nut



Lock Washer



Small Hex Nut

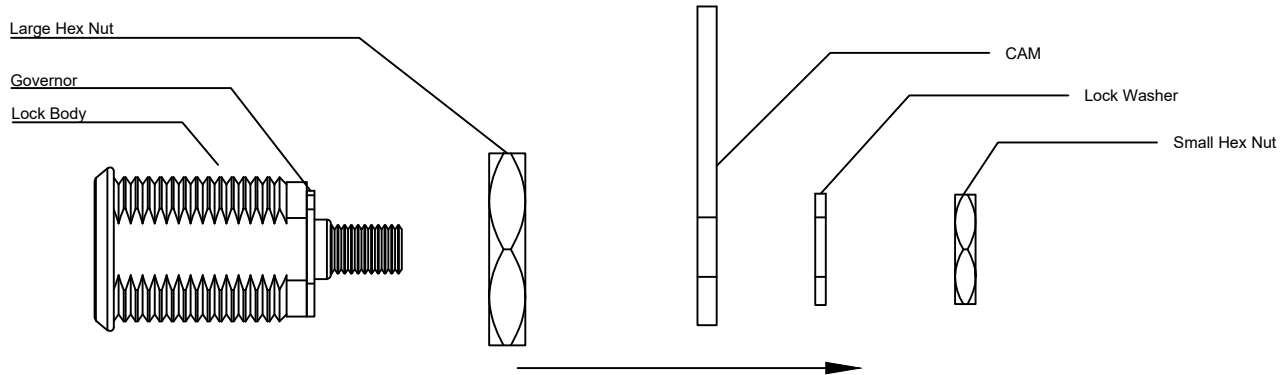
See Next Page

Installation: Patron Lock (MK110BM)

Precision Locker Company
www.precisionlocker.com

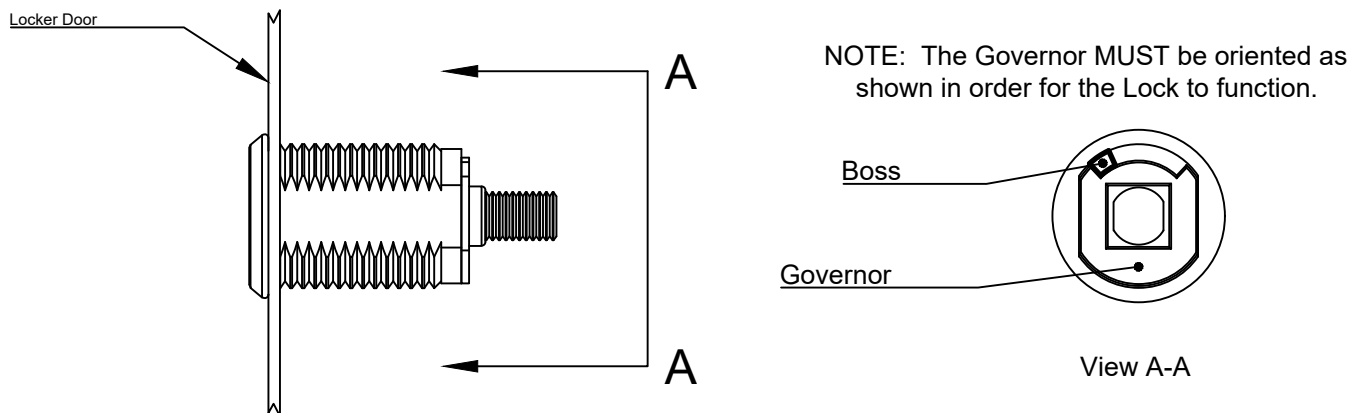
STEP 1 - Prepare Lock for Installation

Remove Small Hex Nut, Lock Washer, CAM & Large Hex Nut from Lock Assembly. **DO NOT REMOVE GOVERNOR** and ensure the Lock Cylinder does NOT slide out the front of the Lock Body.



STEP 2 - Insert Lock Body with Governor attached into Lock Hole in Door.

Key Slot in Lock should be Vertical and Governor should be oriented as shown.



STEP 3 - Secure Lock Body to Door with Large Hex Nut and then reassemble remaining components as

illustrated. CAM should be oriented in the Locked Position. Firmly snug Small Hex Nut. Test operation of lock.

