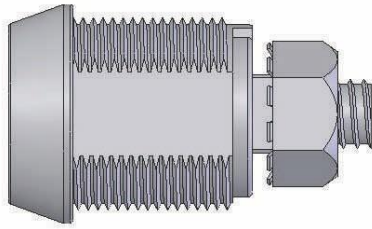


# Installation: Patron Lock (8040)

Precision Locker Company

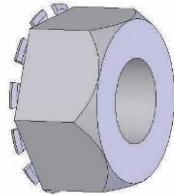
[www.precisionlocker.com](http://www.precisionlocker.com)



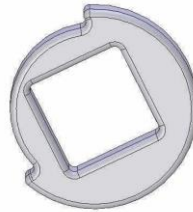
Lock body with  
Small nut attached



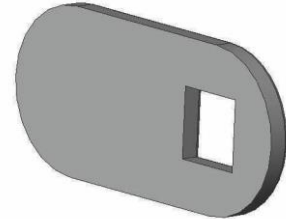
Hex nut



Small nut

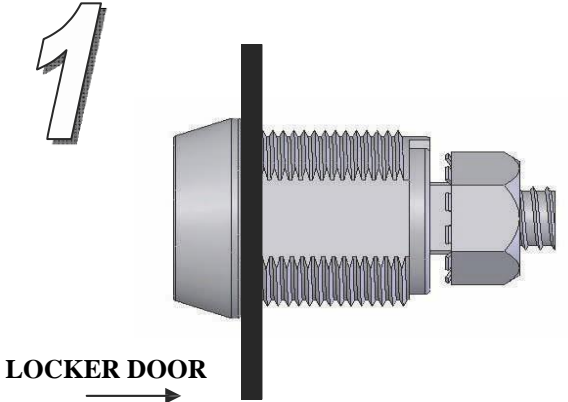


Governor



Cam

**1**

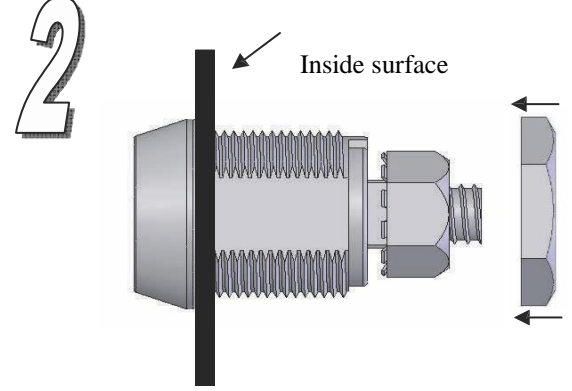


LOCKER DOOR →

REMOVE KEY FROM LOCK.  
Insert lock with small nut attached  
thru lock hole in locker door.

This diagram shows the lock assembly being inserted into a hole in a door. A thick vertical black line represents the door's edge. The lock body is positioned so that its threaded part is on the left and the small nut is on the right, passing through the door hole.

**2**



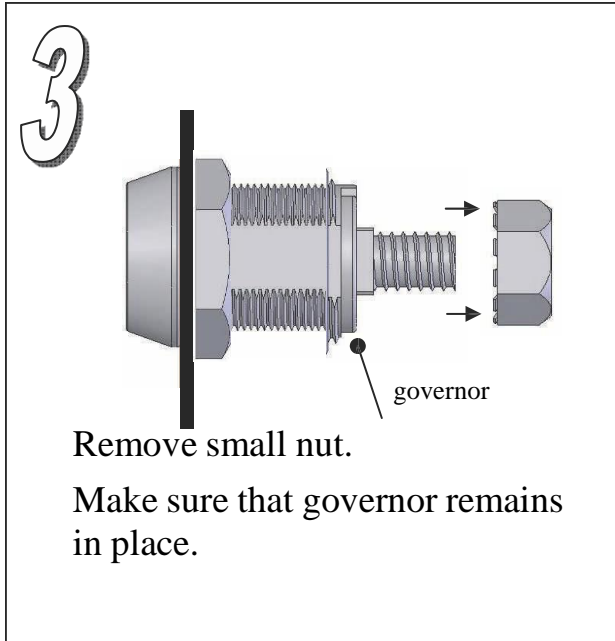
Inside surface

Use hex nut to secure lock to  
inside surface of locker door.

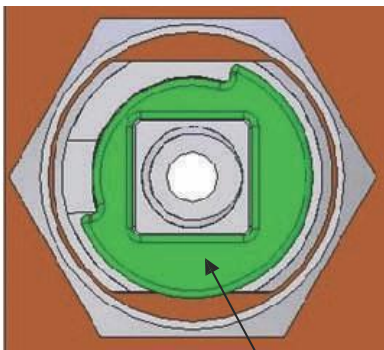
This diagram shows the lock assembly from the previous step. A standard hex nut is being slid onto the threaded part of the lock body from the left. A thick vertical black line represents the door's edge. The nut is being pushed against the door's surface. A label 'Inside surface' with an arrow points to the door edge. On the right, a small inset shows a side view of the nut being tightened against the door.

# Installation: Patron Lock (8040)

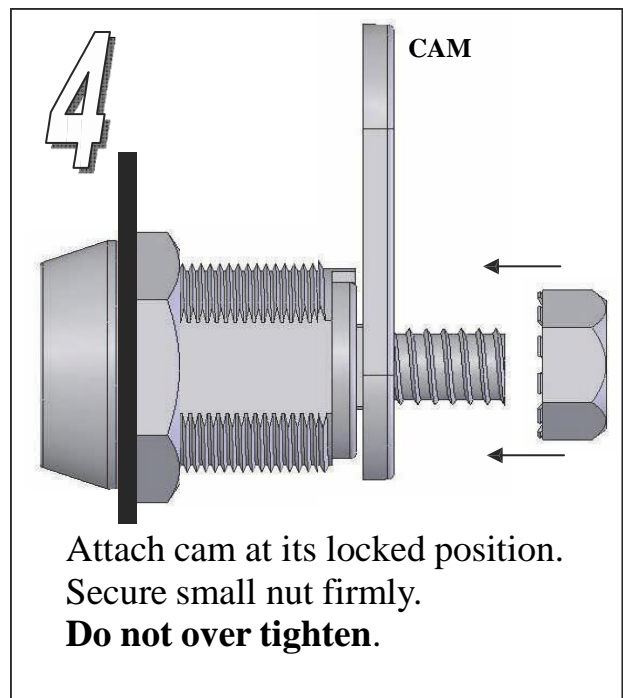
- page 2 -



**Governor should always be oriented as pictured below.**



Governor



Note: Final Cam Adjustment

Cam may be bent either in or out slightly to fine-tune the alignment of the cam with the slot in the cabinet. Adjust as required.

Precision Locker Company  
[www.precisionlocker.com](http://www.precisionlocker.com)